

# POINTSOUTH

## Point South Ventures

Approximately 181 Acres For Sale

\$4,000,000



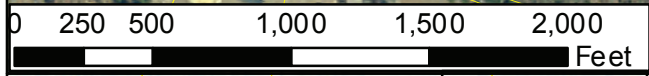
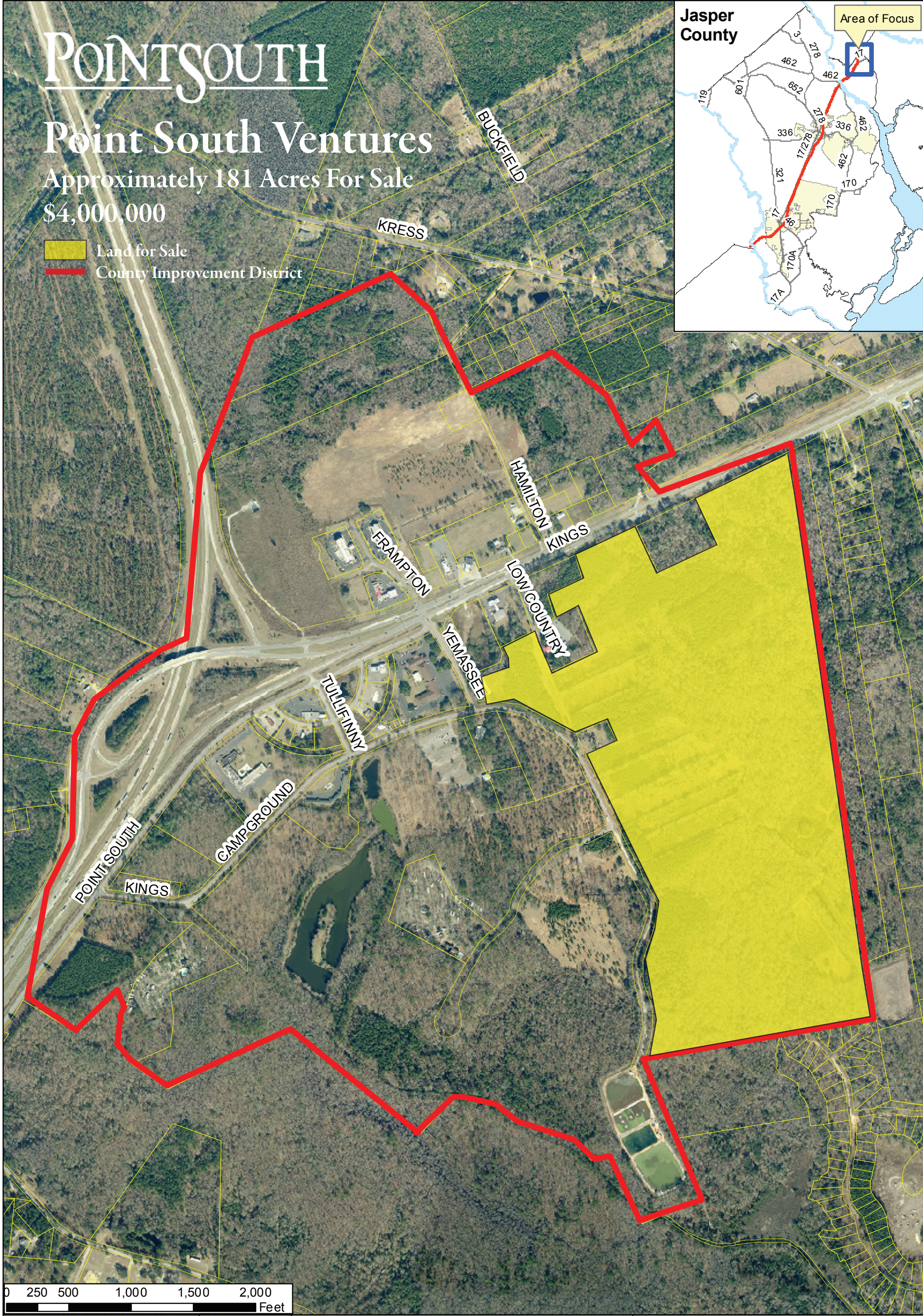
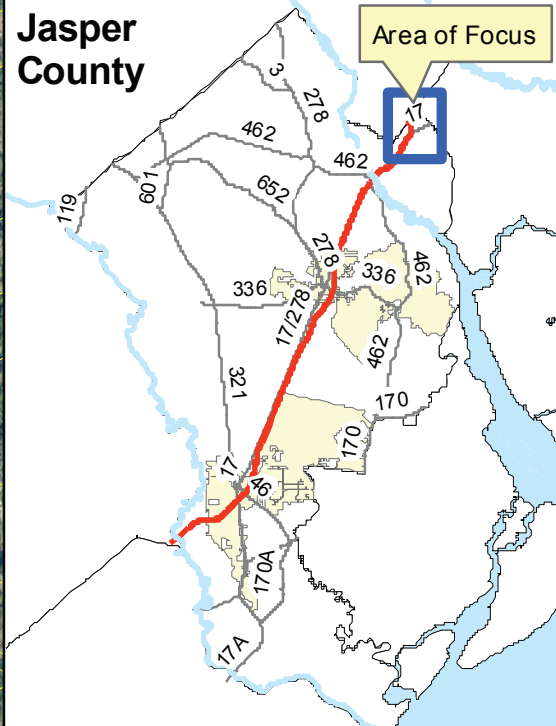
Land for Sale



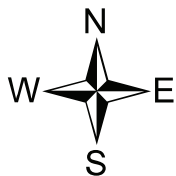
County Improvement District

Jasper  
County

Area of Focus



This map was created by the Jasper County Planning and Building Services and is solely intended to be used as a graphical representation. The GIS maps and data distributed by Jasper County are derived from a variety of public and private sector sources considered to be dependable, but the accuracy, completeness and currency thereof are not guaranteed. Jasper County makes no warranties, expressed or implied, as to the accuracy, completeness, currency, reliability or suitability for any particular purpose of information or data contained in or generated from the County's Geographic Information Systems database. Additionally, Jasper County, or any agent, servant or employee thereof assumes no liability associated with the use of this data, and assumes no responsibility to maintain it in any matter or form. It is the responsibility of the users of this data to contact the necessary public or private entity for verification of the information obtained from these maps.



### Point South- Redevelopment Area Jasper County, SC

Aerial

Jasper County  
Planning and Building Services

358 Third Avenue- Courthouse Square  
P.O. Box 1659  
Ridgeland, SC 29936  
Phone (843) 717-3650  
Fax (843) 726-7707

[www.jaspercountysc.org](http://www.jaspercountysc.org)

